

Copy of Heir of Grief

(Lyricist)

Guitar Tabs

Joren "Tensei" de Bruin

$\text{♩} = 180$

8

l.v. *l.v.*

Tab for measures 1-7. Treble clef, 3/4 time. Measure 1: T 3 2 1 3, A 2, B 4. Measure 2: 2 1 2, 2. Measure 3: 2 1 2, 2. Measure 4: 2 1 2, 2. Measure 5: 3 2, 0. Measure 6: 3 2 3, 0. Measure 7: 3 2 3, 0.

8

l.v. *l.v.* *l.v.*

Tab for measures 8-13. Measure 8: 3 2 3, 0. Measure 9: 3 0 3 0, 1. Measure 10: 0 3 0, 1. Measure 11: 2 0 2, 3. Measure 12: 2 0 2, 3. Measure 13: 0 2 1 3.

14

Distortion

Tab for measures 14-20. Measure 14: 2 1 2, 3. Measure 15: 2 1 2, 3. Measure 16: 2 1 2, 3. Measure 17: 2 1 2, 3. Measure 18: 2 1 2, 3. Measure 19: 2 1 2, 3. Measure 20: 2 1 2, 3.

21

Tab for measures 21-27. Measure 21: 2 1 2, 3. Measure 22: 2 1 2, 3. Measure 23: 2 1 2, 3. Measure 24: 2 1 2, 3. Measure 25: 0 5 0 7, 0 5 0 7. Measure 26: 0 5 0 7, 0 5 0 7. Measure 27: 0 5 0 7, 0 5 0 7.

28

Clean

Tab for measures 28-34. Measure 28: 7 8 7 5 7, 0 5 0 7. Measure 29: 0 5 0 7, 0 5 0 7. Measure 30: 0 5 0 7, 0 5 0 7. Measure 31: 0 5 0 7, 0 5 0 7. Measure 32: 1 1, 0 1 0. Measure 33: 1 1, 0 1 0. Measure 34: 1 1, 0 1 0.

35

Tab for measures 35-41. Measure 35: 2 2 2 1 0, 5 5 3 5 3. Measure 36: 1 0 3, 0 3 1 1. Measure 37: 0 1 0, 2. Measure 38: 2. Measure 39: 2. Measure 40: 2. Measure 41: 2.

(Copyright)

2-2 1-3 1 1 0 2 0 2 2 5 8-7-5 3 0 3 0 5-5-5

54

3-5 3 0-1 3 0 1-3 0 1 2 0 0 2 2 0-1-3 0 3 3 3 1-1

62

Distortion

0 0 2 0 2 3 2 1 0 0 3 0 0 0 3 0 0 1 1/3 1

71

0 1 0 1 0 3 1 0 0 3 0 0 0 3 0 0 1 1/3 1

79

0 1 0 1 0 3 1 5-5-5-5 3 3 3 0 3 1/3 1 0 0 2 2

86

0 0 1 1 1/3 2 5-5-5-5 3 3 3 0 3 1/3 1 0 0 2

Clean
Lv. -----

Distortion -----

94
Clean (2, 2, 2) | Distortion (2 1 3, 2 1 2, 2 7 7, 7 7 7, 2 1 2, 2 1 2)

103
Clean (2 1 2, 2 1 2, 2 1 2, 2 1 2, 2 1 2, 2 1 2, 0 5 0 7)

103

103
Clean (2 1 2, 2 1 2, 2 1 2, 2 1 2, 2 1 2, 2 1 2, 0 5 0 7)

110
Clean (0 5 0 7, 0 5 0 7, 7 8 7 5 7, 0 5 0 7, 0 5 0 7, 0 5 0 7)

110

110
Clean (0 5 0 7, 0 5 0 7, 7 8 7 5 7, 0 5 0 7, 0 5 0 7, 0 5 0 7)

116
Clean (0 5 0 7, 1 1, 0 1 0, 2 2 2 1, 0 5 5 3 5 3, 1 0 3)

116

Clean

116
Clean (0 5 0 7, 1 1, 0 1 0, 2 2 2 1, 0 5 5 3 5 3, 1 0 3)

124
Clean (0 3 1 1, 0 1 0, 2 2 2 1 3, 1 1, 0 2 0, 2 2 2 0)

124

1.

124
Clean (0 3 1 1, 0 1 0, 2 2 2 1 3, 1 1, 0 2 0, 2 2 2 0)

132
Distortion (0 3 2 0 0, 0 3 0 0, 0 3 0 0, 1 3 1 0 0 3)

132

Distortion

132
Distortion (0 3 2 0 0, 0 3 0 0, 0 3 0 0, 1 3 1 0 0 3)

139
Distortion (0 3 2 0 0, 0 3 0 0, 0 3 0 0, 1 3 1 0 0 3)

1 3 0 1 1 3 0 1 3 1 0 1 0 1 0

15 Clean

3 5 7 7 5 7 8 7 0 3 5 5 7 8 8 7 8 3 3 0 0 1 1 2 2

161

0 1 0 0 2 2 2 1 0 7 8 7 8 5 0 5 7

171

8 7 8 10 8 8 3 / 5 5 12 13 15 13 12 13 15 13 12 13 13 12 8 8

179

3 / 5 1 3 2 1 3 2 1 3 2 1 3 0 2 1 2 1 3 1

187

3 / 4 3 1 2 0 2 0 3 0 2 2 3 0 3 2 3 0 2 1 3 4 1 1 2

195

3 0 3 0 7 0 8 0 7 0 8 5 5 1 3 5 7 8 10 5

Distortion

204

7 8 10 $\frac{3}{3}$: 1 0 3 0 2 2 0 0 $\frac{2}{3}$: 0 1 3 5 7 / 8 10 8 10

213

213

10 / 11 10 8 10 8 10 8 10 / 11 10 8 10 8 10 8

217

217

12 / 13 12 13 12 13 15 15 12 / 13 12 10 8 7 8 5 8 10 8 8

223

223

8 8 8 8 10 8 8 8 7 8 7 5 8 10 8 8 8 7 5 3 5

229

229

8 / 15 17 13 15 12 13 10 12 8 10 7 8 5 6 3 5 1 3 0 1 3 0 1 2

233

233

2 0 1 0 1 3 1 3 3 0 1 0 1 3 1 3 5 3 5 7 5 7 8 7 8 10

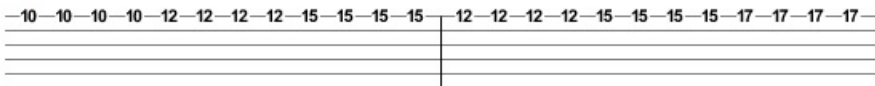
236

236

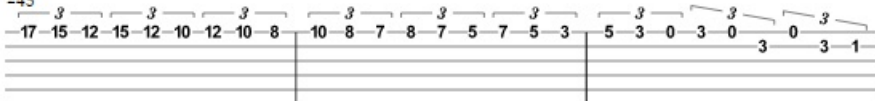
8 10 12 10 12 13 15 17 15 13 12 13 12 12 10 8 8



243



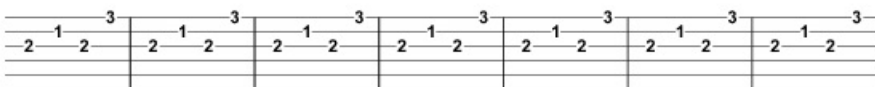
245



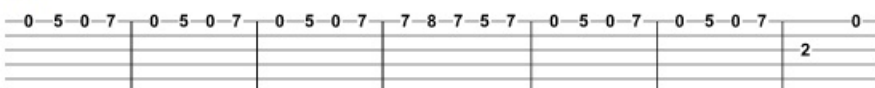
248



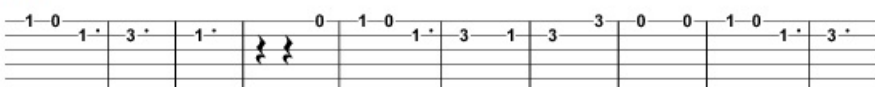
254



261



268



278

7

Musical notation for measure 278, consisting of a single staff with a treble clef. The notation includes fingerings (1, 0, 1, 0, 1, 3, 1, 0, 1, 2, 2, 2, 1, 3, 1, 0, 1, 0, 3, 1) and a slur over the notes 2 and 2. There are also two double bar lines at the end of the staff.

287

Musical notation for measure 287, consisting of a single staff with a treble clef. The notation includes fingerings (0, 1, 0, 0, 2, 0, 0, 2, 0, 0, 3, 2, 0, 0, 3, 2) and a double bar line at the end of the staff.

Clean

293

Musical notation for measure 293, consisting of a single staff with a treble clef. The notation includes fingerings (0, 1, 0, 3, 2, 0, 3, 0, 3, 2, 0, 5, 0, 3, 2, 2, 2, 4, 4, 5, 5) and a double bar line at the end of the staff.